

# The Official Hachinohe City Guide Map



- The National Park Area
- Around the Hachinohe Station
- The Jomon Museum
- The Yokocho Bar Alleyways
- The Morning Markets



VISIT HACHINOHE  
Japan's Northern Frontier

VISIT HACHINOHE

TEL 0178-70-1110

<https://www.visithachinohe.com/>







## Accommodations

Hachinohe City Ryokan and Hotel Association (Hakusankaku) 0178-45-2861

### [Hotels]

#### ► Near Hon-Hachinohe Station

Hachinohe Grand Hotel	0178-46-1234
Hachinohe Park Hotel	0178-43-1111
Hachinohe Plaza Hotel	0178-44-3121
Smile Hotel Hachinohe	0178-43-7711
City Park Hotel Hachinohe	0178-45-7711
Hotel Liberty Hill	0178-43-3831
Hotel II Viale Hachinohe	0178-46-0001
Hotel II Viale Hachinohe Annex	0178-46-0002
Hachinohe Washington Hotel	0178-46-3111
Grand Park Hotel Panex Hachinohe	0178-51-8484
Hotel Select Inn Honhachinohe Ekimae	0178-43-1800
Hotel Marine Castle	0178-47-6800
Hotel Select Inn Hachinohe Chuo	0178-24-3130
Hotel Pearl City Hachinohe	0178-47-0034

Hotel Business in Fujita Hachinohe	0178-43-4518
APA Hotel Honhachinohe	0178-73-3000
Hotel Route Inn Honhachinohe Ekimae	0178-71-2511
Super Hotel Hachinohe Nagayokocho	0178-24-9000
Super Hotel Hachinohe Natural Hot Spring	0178-47-9000
Daiwa Roynet Hotel Hachinohe	0178-73-2555
Hotel Imaruka Hachinohe	0178-43-0123
Dormy Inn Honhachinohe	0178-73-5489

#### ► Near Hachinohe Station

Hachinohe New City Hotel	0178-46-0311
Hotel Tetra Hachinohe	0178-27-0088
Grand Sunpia Hachinohe	0178-23-5151
Hotel Mets Hachinohe	0178-70-7700
Toyoko Inn Hachinohe Ekimae	0178-27-1045
Comfort Hotel Hachinohe	0178-70-4811
"Youtree" Accommodations	0178-27-2227

#### ► Near Same Station

Hachinohe Seagull View Hotel	0178-33-3636
------------------------------	--------------

### [Ryokan and Minshuku (Inns & Guest Houses)]

#### ► Nango

Green Plaza Nango	0178-82-2902
-------------------	--------------

#### ► Near Hachinohe Station

Hachinohe Onsen Ryokan	0178-27-3334
Hachinohe Yuyu Land Shimpachi Onsen	0178-29-4126

#### ► Near Hon-Hachinohe Station

Yamasho Ryokan	0178-22-0029
Daiichi Maruyu Ryokan	
Daini Maruyu Ryokan	0178-45-2200
Daisan Maruyu Ryokan	
Kashiwagi Ryokan	0178-22-7431
Yachiyo Ryokan	0178-22-1090
Hakusankaku Ryokan	0178-22-1758
Tamotokan Accommodations	0178-45-6565
Pension At Home Inn Hachinohe	0178-73-1660

#### ► Near Konakano Station

Pension Guest Lodgings Koyo	0178-47-8787
Ryokan Terumoto	0178-43-3212
Takayama Ryokan	0178-22-1971
Shin Mutsu Ryokan	0178-22-1736

#### ► Near Mutsu-Minato Station

Hachinohe City Fishery Center	0178-31-3001
Pension Benkei	0178-38-7155

#### ► Near Tanesashi-Kaigan Station

Shibatei Restaurant & Accommodations	0178-39-3311
Minshuku Hokaio	0178-38-2477
Ishibashi Minshuku	0178-38-2221
Shiho Minshuku	0178-39-3100
Yoboso Minshuku	0178-38-2431

#### ► Near Mutsuichikawa Station

Business Ryokan Fuji	0178-28-3907
----------------------	--------------





## ► The National Park Area

Enjoy the dynamic views of the Tanesashi coastline by walking, driving, or riding through this beautiful national park.



### 🚌 The Umineko Bus

The Umineko bus runs from the JR Same Station to the Tanesashi-Kaigan Station. It is perfect for sightseeing along the Tanesashi Coast.

**Runs:** From April 1 to mid-November: Daily  
From mid-November to March: Weekends & Holidays ONLY  
\* Does not run during the Umineko Marathon.

**Fee:** Adults ¥100 Children ¥50

**Inquiries:** Transportation Management Section, Transportation Department of Hachinohe City  
TEL 0178-25-5141

### ◀ The Ashigezaki Scenic Overlook

Gaze out across the Pacific Ocean at this No. 1 scenic spot on the Tanesashi coast. A short walk away is the Nakasuka Beach, known for its beautiful wild flowers.



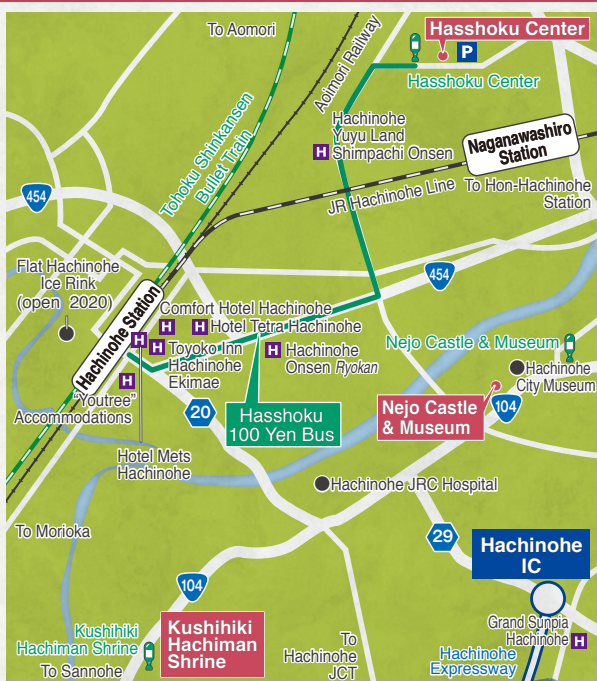
### The Tanesashi Natural Lawn

A natural wonder that offers picturesque views of the deep blue ocean contrasted with sprawling green grass. Perfect for strolling, relaxing, & picnicking



### Kabushima

Home to the city's official bird the black-tailed gull, this shrine is flocked by tens of thousands of gulls in the spring and summer.



## ► Around the Hachinohe Station

As the gateway into Hachinohe City, the area around the Hachinohe Station offers rich dining experiences and access to great historical sites and shrines.

### The Nejo Castle Site

Listed as one of the top 100 castles in Japan, the Ne Castle, or Nejo, was originally built in 1334 by Moroyuki Nanbu. The current building was reproduced based on the castle's structure during the Azuchi-Momoyama Period, when it was the seat of rule for Hachinohe. The Hachinohe City Museum is located adjacent to the site.



**Address** 47 Nejo, Hachinohe  
**Telephone** 0178-41-1726

**Car** Approx. 10 minutes from Hachinohe Expressway Hachinohe IC  
**Hours** 9:00 a.m.~5:00 p.m. (last entry 4:30 p.m.)

**Closed** Mondays (excluding the first Monday of every month, holidays and substitute holidays), days following holidays and substitute holidays (excluding Saturdays, Sundays and holidays), and the New Year Holiday Period

**Admission** Adults ¥250, High School & University ¥150, Elementary & Junior High ¥50



### The Hasshoku Center

An enormous market where you can find anything from fresh seafood, meat, and local sake, to the region's famous *Nanbu Senbei* wheat crackers. Great for dining and souvenir shopping.

**Address** 22-2 Kansai, Kawaragi, Hachinohe  
**Telephone** 0178-28-9311

**Car** Approx. 15 minutes from Hachinohe Expressway Hachinohe IC

**Hours** Market 9:00 a.m.~6:00 p.m.  
Aji Yokocho 9:00 a.m.~6:30 p.m.  
Kuriya Stadium 9:00 a.m.~9:00 p.m.

**Closed** Wednesdays

\*Business hours may vary during busy seasons and on holidays. The Kuriya Stadium is open every day.



Try cooking your own fresh seafood and meat on a charcoal grill!



National Treasure



National Treasure

**Akaito-Odoshi Yoroi** (Red Samurai Armor & Helmet) **Shiroito-Odoshi Tsumadori Yoroi** (White Samurai Armor & Helmet)  
Collection at the Kushiiki Hachiman Shrine

### The Kushiiki Hachiman Shrine

This shrine has been a place of worship since the Kamakura Period (1185-1333) and was the patron shrine of the Nanbu Clan. It houses many cultural assets, including unique architectural features and two national treasures.



**Address** 3 Hachimancho, Yawata, Hachinohe  
**Telephone** 0178-27-3053

**Car** Approx. 10 minutes from Hachinohe Expressway Hachinohe IC

**Hours** National Treasure Hall: 9:00 a.m.~5:00 p.m.  
**Open** All Year Long

**Admission** National Treasure Hall: Adults ¥400, Junior High and High School ¥300, Elementary ¥200

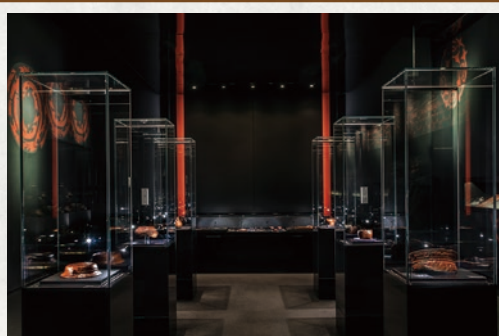


### 🚌 The Hasshoku 100 Yen Bus (Hachinohe Station ~ The Hasshoku Center)

**Fee** ¥100 (per trip)

**Route** Hachinohe Station ⇄ Hasshoku Center (approx. 11 minutes)

Leaving from Downtown? Use the Hasshoku 200 Yen-Or-Less Bus! Approx. 17 minutes



## ► The Jomon Museum

Hachinohe is home to several priceless artifacts from Japan's Jomon Period including the Gassho Dogu, a designated national treasure.

### Experience and learn about Japan's Jomon Period at the Korekawa Jomon Museum

On display are artifacts from the Jomon Period that were excavated in Hachinohe. Popular exhibits include the Gassho Dogu exhibit and the ancient lacquerware exhibit.

**Address** 1 Yokoyama, Korekawa, Hachinohe City  
**Telephone** 0178-38-9511

**Car** Approx. 10 minutes from Hachinohe Expressway Hachinohe IC

**Hours** 9:00 a.m.~5:00 p.m. (last entry 4:30 p.m.)

**Closed** Mondays (excluding the first Monday of every month, holidays and substitute holidays), days following holidays and substitute holidays (excluding Saturdays, Sundays and holidays), and the New Year's Holiday Period

**Admission** Adults ¥250, High School and University ¥150, Elementary and Junior High School ¥50

### The Gassho Dogu

At the Korekawa Jomon Museum Collection

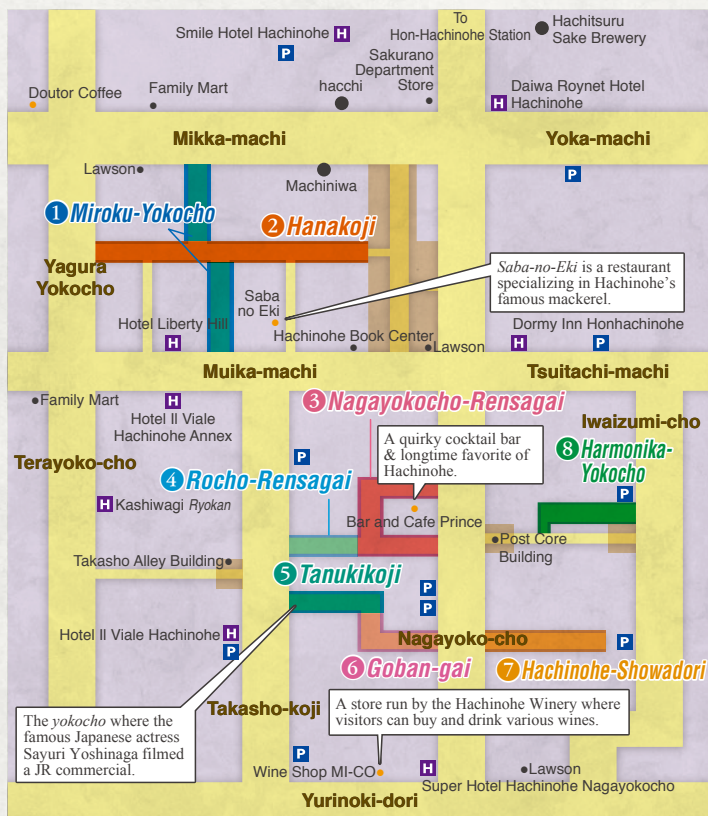
This clay figure was made during the late Jomon Period, approximately 3,500 years ago. With its knees raised and palms pressed together, it appears to be praying. But for what, remains a mystery...



National Treasure

Photograph provided by: the Korekawa Jomon Museum





## The Yokocho Bar Alleyways

Eight *yokocho*, or drinking alleyways, weave through the center of Hachinohe like a maze. Filled with some of the city's best restaurants and bars, let the hospitality of the *yokocho* welcome you with an unforgettable night.



**1 The Miroku-Yokocho (Bar Alleyway)**  
The most famous *yokocho* in Hachinohe, a great place to start or end the night.



**2 Hanakoji**  
Home to a market by day, and some of the finest izakaya by night.



**3 Nagayokocho-Rensagai**  
A *yokocho* lined with several interesting and popular izakaya.



**4 Rocho-Rensagai**  
A lively *yokocho* lined with friendly izakaya.



**5 Tanukikoji**  
The most picturesque *yokocho*, it looks just like a movie set.



**6 Goban-gai**  
A mature atmosphere sets the tone of this *yokocho*.



**7 Hachinohe-Showadori**  
Be transported back in time by this *yokocho* to the Showa Era.



**8 Harmonika-Yokocho**  
A *yokocho* known for its unique and eccentric izakaya.

While traveling through Hachinohe's *yokocho* be on the lookout for statues of the alleyways' mascot: O! Man Hoy!



## The Morning Markets

Mornings in Hachinohe are bustling with activity even before the sun is up. Experience this lively morning market culture by visiting the Mutsu-Minato area bright and early.

Sunday Only!  
One of Japan's largest morning markets!

### The Tatehana Wharf Sunday Morning Market

Over 300 stores line this enormous market where tens of thousands of people come to visit every week. Stalls offer not only fresh seafood and produce, but also prepared food like freshly baked bread, local specialties, & more. Make sure you come early and come hungry!

**Address** Tatehana Wharf, Shin-Minato, Hachinohe City  
**Telephone** 080-5734-3251  
**Car** Approx. 20 minutes from Hachinohe Expressway Hachinohe IC  
**Railway** Approx. 14 minutes from Hachinohe Station on JR Hachinohe Line (bound for Same or Kujii) → Approx. 10-minute walk from Mutsu-Minato Station.  
**Hours** Sunrise-around 9:00 a.m. (every Sunday between mid-March-December)  
**Closed** January-mid-March, and during the Umineko Marathon (held at the beginning of May)

### The Mutsu-Minato Station Morning Market

At this market you can purchase fresh seafood to make your own sushi bowl for breakfast. Open during the weekdays, it is a great option for visitors who cannot make the Sunday market.

### Make Your Own Sushi Bowl for Breakfast!



Choose your favorite sushi toppings  
↓  
Buy rice and miso soup  
↓  
Pile the seafood onto your rice bowl and enjoy!

**Address** Directly in front of the Mutsu-Minato Station  
**Telephone** 0178-33-6151 (City Seafood and Vegetable Retail Market)  
**Car** Approx. 20 minutes from Hachinohe Expressway Hachinohe IC  
**Railway** Hachinohe Station → Mutsu-Minato Station (14 mins.)  
**Hours** 3:00 a.m.-12:00 p.m. (Breakfast is served from around 6:00 a.m.-10 a.m.)  
**Closed** Sundays, New Year, & every Second Saturday of the Month



### The Isaba Sunday Loop Bus

This bus provides an easy and cheap way to get from downtown to the morning market area. Runs only on Sundays.

**Runs:** Every Sunday (April to mid-December)  
\*Does not run during the Umineko Marathon.

**Fee:** Adults ¥100 Children ¥50

**Inquiries:** Transportation Management Section, Transportation Department of Hachinohe City TEL 0178-25-5141

(Downtown)	Jusannichi-machi	Approx. 13 mins
	Minato-Yamate Street Morning Market Yanagi-machi	Approx. 3 mins
	Tatehana Wharf Morning Market Tatehana Fishing Port	Approx. 16 mins
	Mutsu-Minato Station	Approx. 14 mins
(Downtown)	Muika-machi	



## The Festivals of Hachinohe

A dazzling parade of 27 floats & 3 shrines

### The Hachinohe Three Shrines Festival



This UNESCO designated festival is the largest in Hachinohe. It is held every year from July 31 to August 4 and attracts over one million visitors. The highlight of the festival is the traditional procession of three portable shrines or omikoshi alongside twenty-seven stunning floats that reach up to 10m. Decorated with themes from traditional stories, myths, and plays, the floats open and close as they make their way down Hachinohe's main street.

A local folk festival to usher spring

### The Hachinohe Enburi Festival



Enburi is the highlight of the winter season in Hachinohe. The festival features a series of dances that are performed to pray for a good harvest in the coming year. On the first day of the festival, over 30 teams of Enburi dancers perform simultaneously on the main street. The festival is a nationally designated Important Intangible Folk Cultural Property.

