

Aomori Guide Book

青森 AOMORI





You will fall in love with Aomori every time you visit.

Aomori Prefecture has four distinct beautiful seasons. It is blessed with abundant nature, and is uniquely enchanting. Experience the wonder you can find only in Aomori.

Location

Located to the east of the Asian Continent, Japan consists of four major islands (Hokkaido, Honshu, Shikoku and Kyushu), and small islands around them. Aomori prefecture is in the northernmost part of Honshu Island, at almost the same latitude as New York, Beijing, and Rome.

Area

Of the world's area of 135,641 million km², Japan's area accounts for 0.28%, approximately 377,000 km². Japan has the 60th largest area among 192 countries in the world, and its area is approximately one forty-fifth of Russia's area, and one twenty-fifth of Canada's area, China's area and the US's area respectively. Aomori Prefecture's area is 9,644.55 km², the eighth largest prefecture in Japan. Forests account for almost 70% of the entire area of the prefecture.

Population

As of October 1, 2022, Aomori Prefecture's population is 1,237,984 (according to the census). The prefecture has the 31st largest population among all the prefectures in the country, and the third largest population after Miyagi and Fukushima Prefectures among the six prefectures in the Tohoku region.

Climate

Aomori Prefecture has a cold climate. In winter, moist air hitting mountains brings snow, and in summer, areas along the Pacific Ocean sometimes have days with low-temperatures because of easterly winds (called yamase). Aomori Prefecture is unique in that it has noticeable seasonal changes and beautiful nature

Temperature

Average temperature:11.5°C; highest temperature:34.2°C; lowest temperature: -7.9°C (Aomori City in 2021)

Amount of snowfall

Yearly snowfall: 488 cm; maximum snow depth: 129 cm (Aomori City in 2021)

Air routes

Seoul	KAL (140 minutes)	Aomori
Taipei	EVA (215 minutes)	
Tokyo	JAL (80 minutes)	
Osaka (Itami)	JAL (95 minutes) ANA (105 minutes)	
Kobe	FDA (110 minutes)	
Sapporo (Chitose)	JAL (50 minutes) ANA (50 minutes)	Misawa
Nagoya (Komaki)	FDA (80 minutes)	
Tokyo	JAL (80 minutes)	
Osaka (Itami)	JAL (90 minutes)	
Sapporo (Okadama)	JAL (60 minutes)	

Railways

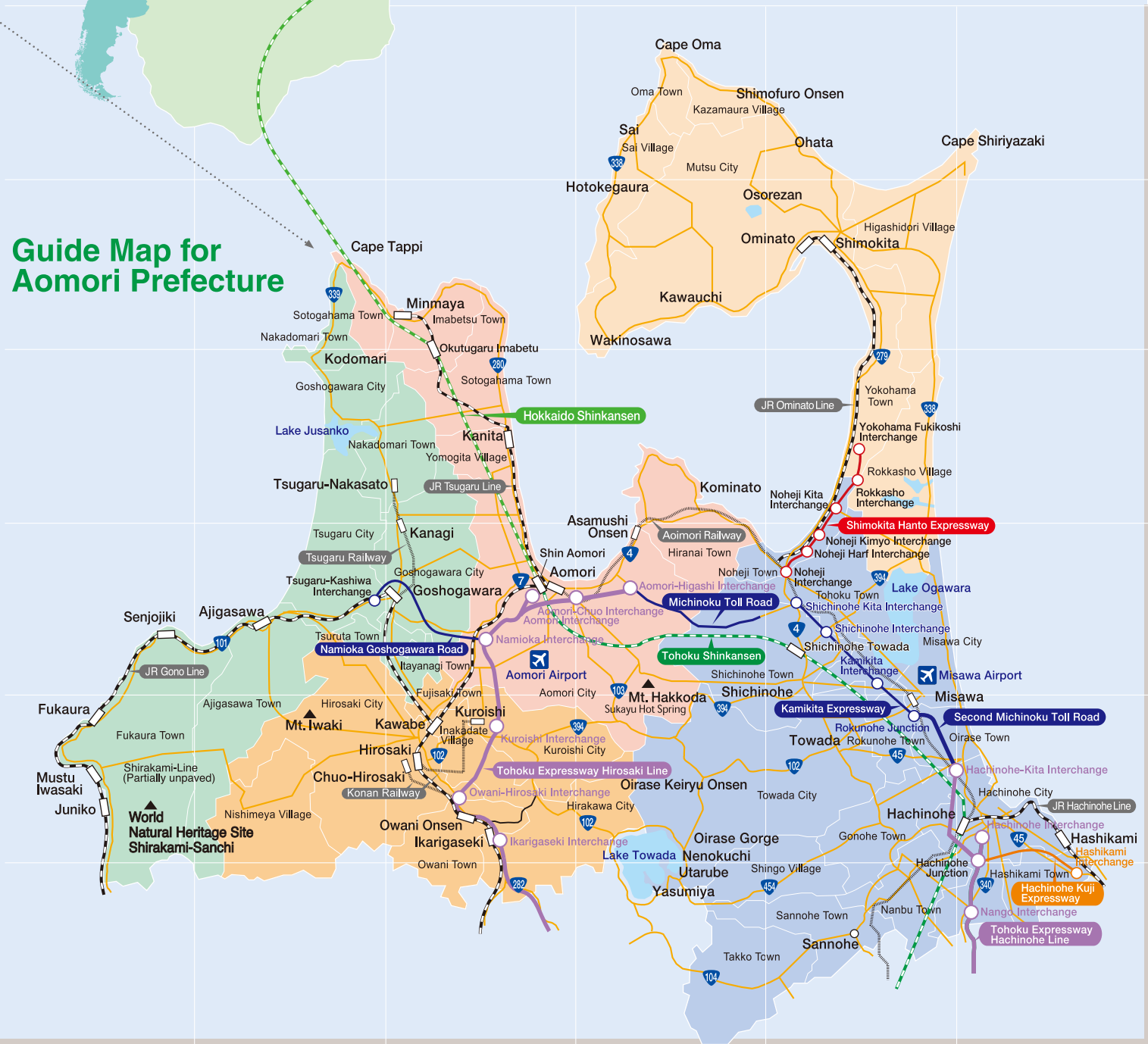
Tokyo	Shin-Aomori	Time required: Approximately 3 hours
Tohoku Shinkansen Hayabusa		
Sapporo	Shin-Hakodate Hokuto	Time required: Approximately 4 hours 30 minutes
Super Hokuto limited express Hokkaido Shinkansen Hayabusa		
Shin-Osaka	Tokyo	Time required: Approximately 5 hours 30 minutes
Tokaido Shinkansen Nozomi Tohoku Shinkansen Hayabusa		

[* The shortest time required by the limited express train of each line is indicated. Transfer time is not included.]

Contents

Information on Aomori Prefecture	P02-03
Nature in Aomori	P04-05
Scenic spots through the four seasons	
Festivals in Aomori and Traditional Performing Arts	P06-07
Summer festival, experience playing the Tsugaru shamisen, etc.	
History and culture of Aomori	P08-09
Jomon culture, Aomori Museum of Art, etc.	
Winter in Aomori	P10-11
Experience nature, winter events, ski resorts, etc.	
Hot springs in Aomori	P12-13
Hot springs and golf courses	
Markets and Cuisine in Aomori	P14-15
Markets, food, and souvenirs	
Enjoyable sightseeing in city areas	P16-17
Aomori City, Hirosaki City, and Hachinohe City	
For inquiries	P18-19

Guide Map for Aomori Prefecture



Experience nature through the four seasons

Fall foliage at Lake Towada

Lake Towada and the World Natural Heritage Site Shirakami-Sanchi change colors beautifully with the coming of each season. Aomori and all its natural beauty touches the hearts of those who behold it.

Towada Hachimantai National Park

Lake Towada

(Towada City) MAP/D-6

Lake Towada is a double caldera lake at the top of a 400-meter-high mountain. The scenery can be enjoyed from on top of the lake and from the observation deck through the four seasons. In particular, its fall foliage is said to be the most beautiful in Japan.

- Approximately 1 hour 30 minutes by car from JR Shichinohe-Towada Station

Towada Hachimantai National Park

Oirase Gorge

(Towada City) MAP/D-5

Oirase Gorge stretches 14 kilometers from Nenokuchi at Lake Towada. Along the gorge with a level difference of 200 meters are scenic spots such as Choshi Falls, Ashura Stream, and Kumoi Falls. It is wonderful to take a walk in the season of new leaves, or red leaves.

- Approximately 1 hour by car from JR Shichinohe-Towada Station

Towada Hachimantai National Park

Hakkoda

(Aomori City) MAP/D-4

Hakkoda consists of the northern and southern Hakkoda Mountains, with the highest summit 1,585 meters above sea level. Hakkoda is home to many bogs and alpine plants, and the majestic landscape can be enjoyed from the ropeway through the four seasons.

- Hakkoda Ropeway

Approximately 1 hour by car from JR Aomori Station

World Natural Heritage Shirakami Sanchi

Anmon Falls

(Nishimeya Village) MAP/B-5

Anmon Falls is a collective term for three falls with drops of 26 meters, 37 meters, and 42 meters respectively, located at the headstream of the Iwaki River in Shirakami-Sanchi. Anmon Falls is one of the most famous scenic spots in Shirakami-Sanchi. The falls with cascades of clear water spilling out of the beech forest are a sight you must see.

- Approximately 1 hour from JR Hirosaki Station by car.

* The footpath may be closed due to fallen rocks.

Cherry Blossoms in Hirosaki Park

"Hanaikada (Floral Raft)"

(Hirosaki City) MAP/C-5

Hirosaki Castle is one of the major cherry blossom-viewing spots in Japan. In spring, about 2,600 cherry trees bloom and create captivating and beautiful scenery with the castle tower, three turrets, five castle gates, and triple moats. This is a photograph of Hanaikada, which is when cherry blossom petals fill the moat around the castle.

- Approximately 10 minutes by car from JR Hirosaki Station

Sanriku Fukko (Reconstruction) National Park Tanesashi Coast

(Hachinohe City) MAP/F-5

Natural grass spreads to the water's edge - a rare sight in Japan. The coastline features white sand, green pine trees, and various rocks. From spring to autumn, various seaside plants and wild flowers bloom.

- Approximately 3 minutes on foot from JR Tanesashi-Kaigan Station

Lake Juniko and Aoike

(Fukaura Town) MAP/A-5

Lake Juniko consists of 33 lakes and ponds that are scattered in the western part of the World Natural Heritage Site Shirakami-Sanchi. One of them is called Aoike (literally "blue pond"), the surface of which is enchantingly shining and beautiful, like melting blue ink.

- Approximately 10 minutes by car from JR Juniko Station

Rapeseed Fields

(Yokohama Town) MAP/E-3

Yokohama Town has one of the largest rapeseed fields blossoming in May. When the flowers are in full bloom, the entire town is covered with a vibrant yellow carpet. A rapeseed flower festival is held during this full bloom season.

- Approximately 10 minutes by car from JR Mutsu-Yokohama Station



Hachinohe Sansha Taisai

December 1, 2016
Yama, Hoko, Yatai,
float festivals in Japan
UNESCO List of the Intangible
Cultural Heritage of Humanity

Goshogawara Tachineputa (Goshogawara City) MAP/C-4

Giant neputa floats that were common during the Meiji Period (1868-1912) have been restored by town volunteers. The procession of valiant Tachineputa measuring 23 meters high together with the spirited sounds of flutes and taiko drums is powerful.

- Festival period: August 4 to 8
- Approximately 5 minutes on foot from JR Goshogawara Station

Nationally designated significant intangible folk cultural asset

Hachinohe Sansha Taisai Festival (Hachinohe City) MAP/F-5

A gorgeous parade featuring floats with a history and tradition stretching back some 300 years. You will be enthralled by the traditional procession of three portable shrines, followed by 27 floats featuring myths, legends, and kabuki.

- Festival period: July 31 to August 4 (Pre-event on July 31 and post-event on August 4)
- Approximately 5 minutes on foot from JR Hon-Hachinohe Station



Nationally designated significant intangible folk cultural asset

Hirosaki Neputa Festival (Hirosaki City) MAP/C-5

A procession of approximately 80 small and large vivid-colored lantern floats featuring Sangokushi, Suikoden, and other legendary stories move through the city. Pictures of beautiful women, or ink paintings that adorn the back of the lantern floats give contrast.

- Festival period: August 1 to 7
- August 1 to 4: Dotemachi course
- August 5 to 6: Ekimae course
- August 7: Dotemachi Nakabi course
- Approximately 15 minutes on foot from JR Hirosaki Station

Tanabu Festival (Mutsu City) MAP/E-2

This is the largest festival in the Shimokita area and dates back more than 370 years. It is a Tanabu Shrine rite. It features a parade of five elaborately decorated Kyoto-style floats accompanied by dancers dancing the traditional Oshimako Nagashi Odori dance.

- Festival period: August 18 to 20
- Approximately 10 minutes by car from JR Shimokita Station

Kuroishi Yosare "Dancing Parade" (Kuroishi City) MAP/C-5

Kuroishi Yosare is one of the three major dancing parades in Japan, and it has its origin in a song with dialogue between a man and a woman, performed during a Bon festival dance 500 years ago. Visitors can enjoy the Te-odori dance accompanied by shamisen, drums, and songs, and a dramatic dancing parade with about 3,000 dancers.

- Festival period: August 15 to 16
- Approximately 5 minutes on foot from Konan Railway Kuroishi Station



Aomori Nebuta Festival

Festivals in Aomori and Traditional Performing Arts

Don't miss one of Japan's hottest festivals!

The summer festivals and traditional performing arts typical of Japan have been handed down for hundreds of years. Festival floats are adorned in vivid colors against the night sky, and the sounds of music accompany the festivals. The passion of people who love their hometown is deeply fascinating.

Nationally designated significant intangible folk cultural asset

Aomori Nebuta Festival (Aomori City) MAP/C-4

Aomori's Nebuta Festival is one of Japan's major festivals. It is an energetic festival held in the summer in Aomori, and is filled with an upbeat energy with Nebuta float figures, festival music, and dancers.

- Festival period: August 2 to 7 (August 1 is the pre-event)
- Approximately 5 minutes on foot from JR Aomori Station

Created by: Hiroo Takenami

Facilities where visitors can experience participating in the "festivals of Aomori" even during the off-season

Tsugaruhan Neputa-mura (Hirosaki City) MAP/C-5

Giant neputa floats and materials are displayed, and flutes and drums are played. Visitors can experience painting a neputa float in the shape of a goldfish. In addition, visitors can also enjoy producing traditional crafts, and shopping for local products in this facility for promoting local specialties to tourists.

- Approximately 10 minutes by car from JR Hirosaki Station



Nebuta Museum WA RASSE (Aomori City) MAP/C-4

Four giant nebuta floats from the Aomori Nebuta Festival are displayed, and their history and appeal are introduced. Visitors can enjoy everything about nebuta throughout the year.

- Approximately 1 minute on foot from JR Aomori Station



Tachineputa no Yakata (Tachineputa Museum) (Goshogawara City) MAP/C-4

Floors from the nationally popular summer festival, including three giant Tachineputa standing over 23 meters high, are displayed on a permanent basis. Visitors can enjoy everything about the festival, including videos and a festival music practice venue, throughout the year.

- Approximately 5 minutes on foot from JR Goshogawara Station



Experience
Tsugaru Shamisen



Tsugaru Shamisen Tourist Hall (Goshogawara City) MAP/C-4

The Tsugaru Shamisen Tourist Hall is a unique facility, as the home of the Tsugaru shamisen, to introduce the history of the Tsugaru Shamisen, Tsugaru folk music, and local performing arts. Visitors can enjoy a live performance of the Tsugaru shamisen, and also experience playing the shamisen by themselves.

- Approximately 5 minutes on foot from Tsugaru Railway Kanagi Station



Experiencing tradition 「Tsugaru Shamisen」



Tsugaru Shamisen

Get in touch with arts cultivated in Aomori, and the Ancient Jomon culture

Visitors to Aomori will be impressed by a cultural heritage enriched and enhanced by the people of Aomori. This heritage includes Sannai Maruyama Site, which is one of Japan’s largest archeological sites from the early to middle Jomon period, as well as other buildings where visitors can get in touch with the culture and history of Aomori.



National historic Site
Kamegaoka Site
(Tsugaru City) MAP/B-4

Clay figurines and stone artifacts from the latter part of the Jomon Period, including a goggle-eyed clay figurine (designated a national important cultural property) have been discovered at this site. Excavated stone artifacts from the latter part of the Jomon Period feature red lacquered designs drawn on black lacquer, characteristic of the Kamegaoka culture.
● Approximately 20 minutes by car from JR Kizukuri Station

The Jomon Prehistoric Sites in Northern Japan were inscribed on the UNESCO World Cultural Heritage List in July 2021.

National historic site
Korekawa Site
(Hachinohe City) MAP/F-5

An archeological site from the Jomon period famous throughout the country, the Korekawa Site spread across the southeast area of Hachinohe City along the Niida River. Excavated artifacts are displayed at the Korekawa Archeological Institution and the Hachinohe City Museum. Along the opposite shore of the Niida River is the Kazahari site. This figurine unearthed from the remains of a pit dwelling is in a sitting position with its hands clasped in the front as if praying. It is called "Gassho Dogu," meaning "Praying Figurine." In July 2009, the Gassho Dogu was designated a national treasure and displayed at the Korekawa Archeological Institution.

- Korekawa Archeological Institution
- Approximately 20 minutes by car from JR Hachinohe Station
- [Inquiries] TEL: 0178-38-9511
- Hachinohe City Museum
- Approximately 10 minutes by car from JR Hachinohe Station
- [Inquiries] TEL: 0178-44-8111



Nationally designated special historic site
Sannai Maruyama Site
(Aomori City) MAP/C-4

This site is the remains of one of Japan’s largest settlements in the Jomon period occupied from approximately 3,900 – 2,200 B.C. A number of remains, including the remains of large pit dwellings, and buildings with columns embedded in the ground have been discovered.
● Approximately 10 minutes by car from JR Shin-Aomori Station, and approximately 20 minutes by car from Aomori Airport



Visitors can experience people’s way of life and the profound history rooted in this community.



Osamu Dazai Museum
Shayo-kan
(Goshogawara City) MAP/C-4

This building has been restored to the way it was when it was occupied by Osamu Dazai, the most prominent writer from Aomori. In the warehouse, there is an exhibition room displaying manuscripts written by Osamu Dazai, and his favorite cloak.
● Approximately 10 minutes on foot from Tsugaru Railway Kanagi Station



Hoko-ji Temple
(Nanbu Town) MAP/E-6

The wooden pagoda is the tallest three-story pagoda in Japan, and houses Japan’s oldest Buddhist relics. There is also Senbonmatsu (one thousand pines), which is a prefectural protected species, and 1000-year-old Jisugi (Japanese cedar). Visitors can also experience Zen sitting meditation.
● Approximately 20 minutes by car from Aomori Railway Suwanotaira Station



National important cultural property
Five-story pagoda in Saisho-in Temple
(Hirosaki City) MAP/C-5

The five-story pagoda was built in 1667 in order to hold a service for the war deaths of friends and enemies alike at the time of the unification of Tsugaru. This five-story pagoda, 31.2 meters in height, exhibits a beautiful contrast of copper-red walls and white stucco. It is the northernmost pagoda in Japan designated as an important national cultural property.
● Approximately 10 minutes by car from JR Hirosaki Station



Iwakisan Shrine
(Hirosaki City) MAP/B-5

Iwakisan Shrine was built at the base of Mt. Iwaki, known as the Tsugaru Fuji, more than 1,200 years ago. A giant two-story gate 22 meters in height, an inner gate, the hall of worship, and the main shrine were designated as important cultural properties. The main building with richly colored, elaborately carved sculptures is quite impressive.
● Approximately 40 minutes by car from JR Hirosaki Station

Hirosaki Museum of Contemporary Art
(Hirosaki City) MAP/C-5

This museum was built under the concept of “succession of memory” in two renovated sake brewery warehouses from 1907 and 1923. In the art building where exhibitions are held, walls and pillars from when it was a warehouse still remain, and you can feel the building’s long history. In the café and shop building, there is also a factory that produces cidre from Aomori’s delicious apples.
● Access: 10 minutes by car from JR Hirosaki Station Closed days: Tuesdays (if a national holiday is on a Tuesday, the following day)
Contact information: Hirosaki Museum of Contemporary Art
2-1 Yoshino-cho, Hirosaki City, Aomori, Japan 036 – 8188
TEL: 0172-32-8950
<https://www.hirosaki-moca.jp/en/>



©Naoya Hatakeyama

Hachinohe Art Museum
(Hachinohe City) MAP/F-5

The Hachinohe Art Museum has a collection of about 3,000 art pieces that focuses on works that have a connection with Hachinohe City. Using the theme of “encounters and learning,” it develops various exhibitions, interactive activities between people, and projects.
● Approximately 10 minutes on foot from JR Hon-Hachinohe Station
<https://hachinohe-art-museum.jp/visitor-en/>



©Daici Ano

Aomori Museum of Art
(Aomori City) MAP/C-4

In pursuit of original works by unique artists from Aomori Prefecture, and to communicate the artistic culture of Aomori to the world, the museum actively develops various cultural and artistic activities. In addition to rooms for planned exhibitions, there are also rooms for the permanent collection, a theater, a workshop, a community gallery, a restaurant, and a museum shop.
● Approximately 10 minutes by car from JR Shin-Aomori Station, Approximately 20 minutes by car from Aomori Airport

[Overview of permanent exhibitions]

Permanent exhibitions feature artists from Aomori, such as Shiko Munakata, Yoshitomo Nara and Toru Narita.		
Floor	Names of the permanent exhibition rooms	Major artists
B2F	Aleko Hall, etc.	Chagall: four backdrops for <i>Aleko</i> *Chagall's backdrops for scenes 1, 2, and 4 of the ballet Aleko are normally on display. From April 25, 2017, to March 2024 (end date subject to change), the backdrop for scene 3 will also be on display, so all four backdrops can be viewed together. Yoshitomo Nara: works including "Aomori Dog"
B1F	Shiko Munakata Exhibition Room	Shiko Munakata: woodblock prints, oil paintings

The museum closes on the second and fourth Monday every month, and December 29 to 31 (Closing days during planned exhibitions may change.)
Admission fees for viewing permanent collection:
510 yen for adults, 300 yen for college and high school students, 100 yen for elementary and junior high school students (Entrance fee is free for school activities)
* Separate fee for planned exhibitions.

<Inquiries>
Aomori Museum of Art
185 Aza Chikano, Yasuta, Aomori City 038-0021; TEL: 017-783-3000
<http://www.aomori-museum.jp/en/>

A city-wide initiative to fill the city center with art to be enjoyed during strolls through the city
Towada Art Center
(Towada City) MAP/E-5



The main Towada City Kanchogai Avenue, known for its beautiful cherry blossoms and selected as one of the 100 best roads in Japan, is transformed into a huge open art space with works from in and outside of Japan. It is a unique endeavor. Towada Art Center located roughly in the center of the street, is a unique building with each exhibition room connected by a glass-walled corridor. The artworks are displayed in an open manner, where they can be viewed in the exhibition rooms or even from the street. Three art squares across the street are a popular attraction.
● Approximately 20 minutes by car from JR Shichinohe-Towada Station
<https://towadaartcenter.com/>

Winter in Aomori

Snowy World. Enjoy the winter of beautiful Aomori

Aomori's numerous ski trails are highly regarded by foreign tourists because they offer good powder snow so skiers can enjoy dynamic skiing in the middle of the vast wilderness. Visitors can also enjoy different winter sports such as snow trekking through the vast nature of Aomori.

Hakkoda Ropeway (Aomori City) MAP/D-4

It takes about 10 minutes by the ropeway from the base to the top of the mountain 1,324 meters above sea level. An ocean of trees spreads below your eyes, so you will enjoy a commanding 360-degree view.
● Approximately 1 hour by car from JR Aomori Station



Tsugaru Railway Stove Train (Goshogawara City) MAP/C-4

There are atmospheric coal potbelly stoves on this train, which has a nostalgic atmosphere with wooden window frames and floors. The Stove Train has been operating from December to March since 1940.

● The Stove Train leaves from Tsugaru Railway Tsugaru-Goshogawara Station.



Winter 'Cherry Blossom' Light Up (Hirosaki City) MAP/C-5

Hirosaki Park, in Hirosaki City, Aomori Prefecture, is famous for its cherry blossoms, which attract visitors from all over the world. At this special event, where the snow on the branches of the cherry trees is illuminated with pink lights, visitors can enjoy 'cherry blossoms' even in winter.

● Approximately 10 minutes by car from JR Hirosaki Station



Snow Sports Park Aomori (Aomori City) MAP/F-5

In winter, the New Aomori Prefecture General Sports Park is transformed into Snow Sports Park Aomori. The spacious grounds and abundant snow are perfect for activities such as snowmobile riding and banana boat snow rafting.

● Approximately 25 minutes by car from JR Aomori Station



Snow Monsters in Hakkoda (Aomori City) MAP/D-4

Weather-beaten trees in Hakkoda transform into monstrous but beautiful and magnificent snow monsters. There is a tour to walk through these trees and enjoy taking a hot spring bath.

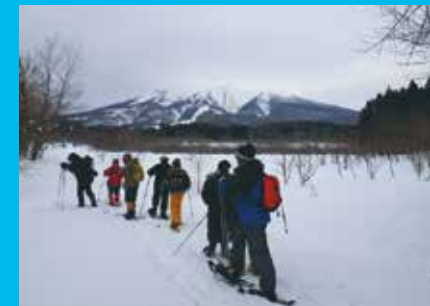
● Approximately 1 hour by car from JR Aomori Station

Snow mountain snow trekking in the crisp and refreshing air



Shirakami Snow Trekking (Nishimeya Village) MAP/B-5

Participants take an approximately two-kilometer walk through the beech forest covered deeply with snow and along the Anmon River. A walk through the shining snow field is truly invigorating.
● Approximately 1 hour by car from JR Hirosaki Station



Mt. Iwaki Snow Shoe Trekking (Hirosaki City) MAP/B-5

Trekking at the foot of the snow-covered Mt. Iwaki in the clear air wearing snow shoes. You may be lucky enough to find the footprints of animals.

● Approximately 40 minutes by car from JR Hirosaki Station



Snow hiking near Juniko (Fukaura Town) MAP/A-5

Participants wear kanjiki, which are snowshoes used by people working in winter mountains in order to prevent their feet being buried in snow, and take a walk around Lake Juniko. One may encounter Japanese serows, snow monkeys, or other wild animals.

● Approximately 15 minutes by car from JR Juniko Station



Hakkoda Snow Hiking (Aomori City) MAP/D-4

There are a variety of trekking courses through the nature, snow monsters and beech forests of Hakkoda. Enjoy the winter of Hakkoda!

● Approximately 1 hour by car from JR Aomori Station



Oirase and Tsuta-no-mori Snow Rambling (Towada City) MAP/D-5

You can take a trekking tour in snow shoes through the "Tsuta-no-mori" forest in Minami-Hakkoda, taking in the fresh air of Oirase Gorge and the gentle sloped beech forest. Trekking comfortable for beginners.

● Approximately 1 hour by car from JR Shichinohe-Towada Station



Asamushi Onsen Snow Hiking (Aomori City) MAP/D-4

Trekking in snow shoes to a view point with a panoramic view of Mutsu Bay and Asamushi Onsen. Look for animal paw prints and wild birds.

● Approximately 10 minutes by car from Aomori Railway Asamushi-Onsen Station

Ski Resorts and Ice-Skating Rinks in Aomori



Moya Hills Ski Resort (Aomori City) MAP/D-4

This is a popular ski resort located in the suburbs of Aomori City. The ski resort offers various slopes for the enjoyment of skiing according to the levels of skiers. At night, the ski resort offers a panoramic night view of Aomori City.

● Approximately 30 minutes by car from Aomori Airport
● Approximately 40 minutes by car from JR Aomori Station



Hakkoda Ski Resort (Aomori City) MAP/D-4

This ski resort offers long dynamic slopes with natural topographic features incorporated, such as trees glazed with ice, and wavy slopes. Skiers can enjoy skiing from the beginning of December to the middle of May.

● Approximately 1 hour by car from Aomori Airport and JR Aomori Station



Aomori Spring Ski Resort (Ajigasawa Town) MAP/B-4

This ski resort offers natural powder snow and a long slope running toward the ocean. Moreover, skiers can also enjoy taking a hot spring bath. This ski resort is one of the best ski resorts in the Tohoku area.

● Approximately 1 hour 10 minutes by car from Aomori Airport
● Approximately 30 minutes by car from JR Ajigasawa Station



Owani Hot Spring and Ski Resort (Owani Town) MAP/C-5

This ski resort was used as a venue for alpine jumping and the like in the 2003 Winter Asian Games. Located in a hot spring resort, the ski resort is the largest ski resort in the prefecture.

● Approximately 1 hour by car from Aomori Airport
● Approximately 10 minutes by car from JR Owani-Onsen Station



Makado Hot Springs and Ski Resort (Noheji Town) MAP/D-4

This ski resort offers a variety of slopes for high and moderate-speed skiing, from slopes for families to slopes through forests. Skiers can enjoy a panorama of the vast wilderness.

● Approximately 1 hour 20 minutes by car from Aomori Airport
● Approximately 10 minutes by car from Aomori Railway Noheji Station



Towadako Ski, Snowboard & Spa Resort (Towada City) MAP/D-5

This ski resort is most suitable for beginners and families. The resort is located near Lake Towada, Towadako Onsenkyo, and other scenic spots, so you can enjoy skiing and taking hot spring bath.

● Approximately 1 hour by car from Misawa Airport
● Approximately 1 hour by car from JR Shichinohe-Towada Station

Ice-Skating Rinks

Technol Ice Park Hachinohe MAP/F-5
Conveniently located a short walk from downtown Hachinohe City, the Technol Ice Park is one of 3 world-class specialized speed skating rinks in Japan.
● Approximately 15 minutes on foot from JR Hon-Hachinohe Station

Prefectural Skating Rink (Aomori City) MAP/C-4

This skating rink is used for ice skating and ice hockey in winter, and as the nation's largest indoor inline skating rink in summer.

● Approximately 20 minutes by car from JR Aomori Station

Three Major Winter Festivals in Aomori



Hirosaki Castle Snow Lantern Festival (Hirosaki City) MAP/C-5

During the cold winter night, the snow-covered castle tower is lit up, and candle-lit snow lanterns and mini Kamakura igloos transform the area into a world of snow and light.

● Approximately 10 minutes by car from JR Hirosaki Station



National important intangible folk cultural property

Hachinohe Enburi Festival (Hachinohe City) MAP/F-5

Dancers with headgear symbolizing the head of a farm horse dance with their heads moving close to the ground vigorously in precise order and in unison with flutes and drums. The festival is held for four days from February 17 every year.

● Approximately 10 minutes on foot from JR Hon-Hachinohe Station

● Approximately 20 minutes by car from JR Hachinohe Station



Lake Towada Winter Story Festival (Towada City and Lake Towada) MAP/D-6

In a magical atmosphere with snow and lights, visitors can enjoy listening to live Tsugaru shamisen performances, experience dancing as a Nebuta dancer, and eating cuisine unique to Aomori. It is moving to watch fireworks in the cold air of winter.

● Approximately 1 hour 30 minutes by car from JR Shichinohe-Towada Station

Enjoy Onsen in the Middle of Nature

Aomori is known for some of the most prominent onsen resorts in Japan. There are many atmospheric onsen inns unique to Japan all ready to heal guests' hearts.



Tsuta Onsen (Towada City) MAP/D-5

The inn has long been loved and its secluded atmosphere still remains now. A bathhouse made of hiba was constructed right above the source of a spring, so hot spring water comes out directly from the source.
● Approximately 1 hour 30 minutes by car from JR Aomori



Ajigasawa Onsen Grand Mer Sankaiso (Ajigasawa Town) MAP/B-4

A hotel with an impressive classical interior. Guests will be able to enjoy a view of the Sea of Japan from the window, and also a magnificent view from the large bath, and outdoor hot spring baths. The hotel's sea food dishes are popular.
● Approximately 15 minutes on foot from JR Ajigasawa Station



Tsugaru Minamida Onsen Hotel Apple Land (Hirakawa City) MAP/C-5

Minamida hot spring is a beauty hot spring that is said to smooth the skin. The Hinoki baths that guests can reserve exclusive use for a relaxing experience, and the famous "open bath with floating apples" are well received by guests.
● Approximately 10 minutes by foot from Konan Railway Hiraka Station Hiraka Station

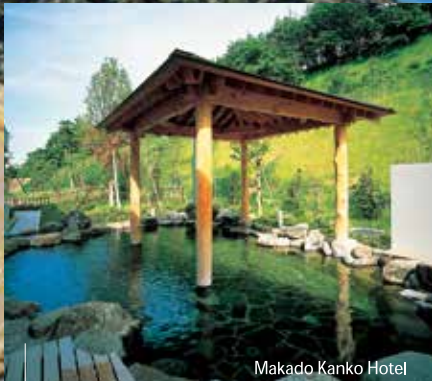
Asamushi Onsen (Aomori City) MAP/D-4

Known as a prime location in Aomori to relax and escape from the hustle and bustle, travelers will find resort-like hotels and hot spring resorts reminiscent of the good old days. A live Tsugaru shamisen performance is presented every day free of charge. Free footbaths are available in front of the station and in the park.
● Approximately 1 minute on foot from JR Aomori Railway Asamushi-Onsen Station



Owani Onsen (Owani Town) MAP/C-5

The history of the onsen goes back some 800 years. Along the clear stream of the Hira River stand onsen inns and public bathhouses with the atmosphere of the past. People have been enjoying the Owani hot springs since olden times, as an "Okuzashiki" (an elegant place where guests are received) in Tsugaru.
● Approximately 5 minutes on foot from JR Owani Onsen Station



Makado Onsen (Noheji Town) MAP/D-4

There are legends about a crane that healed its wounds here, and stories about famous historical figures Yoshitsune and Benkei taking a bath here.
● Approximately 20 minutes by car from JR Noheji Station



Aoni Onsen (Kuroishi City) MAP/C-5

A secluded onsen at Hakkoda ravine, where the only light is from lamps. The open air bath along the mountain stream, and the hiba wood bath create a rustic onsen atmosphere.
● Approximately 40 minutes by car from Konan Railway Kuroishi Station



Sukayu Onsen (Aomori City) MAP/D-5

Designated in 1954 as the first hot spring in Japan with healing properties, Sukayu onsen is the oldest hot spring in Aomori. Its large bathhouse for mixed bathing called Senninburo (meaning a bath for 1,000 persons) is well known. There is time set aside exclusively for women, as well as smaller separate baths for men and women that feature the same hot spring quality.
● Approximately 1 hour by car from JR Aomori Station



Komaki Onsen at Hoshino Resorts Aomoriya (Misawa City) MAP/E-5

A hot spring covering a vast area of approximately 730,000 square meters. Soak in the outdoor hot spring. Aomori Nebuta Festival floats are displayed in the building.
● Approximately 10 minutes on foot from Aomori Railway Misawa Station



Yagen/Oku-Yagen Onsen (Mutsu City) MAP/D-1

A quiet onsen village in a mountainous area. Yagen onsen was named after "yagen," an instrument used to grind herbal medicines for traditional Chinese medicine, because the source of the onsen resembled yagen. Oku-Yagen Onsen, which is famous for the legendary kappa, is located about two kilometers upstream.
● Approximately 1 hour by car from JR Shimokita Station

Golf Courses in Aomori Prefecture

Touou Country Club MAP/D-4

Hilly golf courses. The courses vary widely, so golfers can enjoy playing golf strategically. Golfers can also enjoy a view of Mutsu Bay beyond lush woods.
● Approximately 15 minutes by car from Aomori Railway Asamushi-Onsen Station

Aomori Royal Golf Club MAP/C-5

Hilly golf courses. Though the golf courses are situated on the top of a hill, the golf courses are gently undulated. However, the courses are ingeniously laid out with ponds, bunkers, and trees.
● Approximately 50 minutes by car from Aomori Airport
● Approximately 15 minutes by car from JR Owani Onsen Station

Natsudomari Golf Links MAP/D-3

Hilly golf courses. The whole course is gently undulated, and creeks and ponds are effectively laid out. The course requires skilled techniques and strategies of golfers.
● Approximately 30 minutes by car from Aomori Railway Asamushi-Onsen Station

Shimokita Three Hundred Golf Club MAP/E-3

Hilly golf courses. The course features gentle up and down slopes on which golfers can enjoy beautiful scenery that changes with the four seasons.
● Approximately 30 minutes by car from JR Noheji Station

Tsugaru Country Club (Hyakuzawa Course) MAP/B-5

Hilly golf courses. Located in a hilly area with a view of Mt. Iwaki, the golf courses are laid out so golfers can enjoy shooting long shots. The courses are long enough to reach respective holes.
● Approximately 30 minutes by car from JR Hirosaki Station

Tsugaru Country Club (Dake Course) MAP/B-5

Hilly golf courses. Located at the base of Mt. Iwaki, all courses are somewhat short but they vary widely. The courses are designed for beginners to experienced players to enjoy playing golf.
● Approximately 40 minutes by car from JR Hirosaki Station



Tsugaru Kogen Golf Course MAP/C-5

Hilly golf courses. The courses are laid on a gently undulated plateau, and each hole is separated by natural forests. The 11th shot hole over a pond has been much talked about among golf players.
● Approximately 35 minutes by car from JR Hirosaki Station

Aomori Spring Golf Club MAP/B-4

Located at the base of Mt. Iwaki, Aomori Spring Golf Club has golf courses laid on the natural topography. The golf courses with 36 holes were designed strategically by Arnold Palmer.
● JR Hirosaki Station

Hachinohe Golf Club MAP/F-5

Hachinohe Golf club offers riverside golf courses. With a history of more than 30 years, the golf club offers flat golf courses that require a technique to analyze winds blowing over the river basin.
● Approximately 5 minutes by car from JR Hon-Hachinohe Station

Hachinohe Country Club MAP/F-5

Hilly golf courses. Bunkers are laid out effectively, and the layout of holes over ponds and trees requires high level techniques.
● Approximately 30 minutes by car from JR Hon-Hachinohe Station

Towadako Kogen Golf Club MAP/D-5

Hilly golf courses with a total of 27 holes. With a magnificent view of Mt. Hakkoda, side bunkers are effectively placed and the holes are strategically laid out.
● Approximately 1 hour 10 minutes by car from JR Aomori Station

Michinoku Kokusai Golf Club MAP/E-5

Michinoku Kokusai Golf club offers forest golf courses overwhelmed by lush forests. Beginners to low handicap players can enjoy playing golf.
● Approximately 25 minutes by car from Aomori Railway Misawa Station

Biwanodai Golf Club MAP/C-5

Hilly golf courses. Located at a plateau with a commanding view, golf players will be able to enjoy playing golf in a relaxed manner on the hilly golf courses in the middle of the wilderness overlooking Mt. Hakkoda.
● Approximately 25 minutes by car from Owani Onsen Station

Towada International Country Club MAP/E-5

Towada International Country club offers forest golf courses and hilly golf courses. There are few trees, and each hole is placed in an almost flat area. Because fairways are wide enough, golf players will be able to enjoy hitting spectacular shots.
● Approximately 10 minutes by car from Aomori Railway Misawa Station

Markets and Cuisine in Aomori

Markets offer a taste of fresh seafood and local color

People flock to the market to chat with the local vendors, buy freshly caught seafood, and enjoy it right in the market.

Hasshoku Center (Hachinohe City) MAP/F-5

Hasshoku Center is one of the largest markets in Hachinohe. It offers a variety of fresh seafood, meat, vegetables, dried goods, and souvenirs. In the center, there are restaurants as well as places where customers can grill and eat seafood and meat they have purchased in the market.
● Approximately 10 minutes by car from JR Hachinohe Station

Apples

The Aomori apple harvest accounts for more than 50% of all apples harvested in Japan. There are many different kinds of apples harvested, including Tsugaru, Sekaiichi and Fuji, during the different harvest seasons.



Garlic

Fukuchi White 6-clove garlic is a variety with large cloves, and Aomori accounts for approximately 70% of domestic production. Its snowy white, high quality has won high acclaim throughout Japan. A product that Aomori is proud of.



Burdock

Aomori produces large harvests. Aomori's burdock has outstanding aroma and flavor, and is known for its crunchy texture. Cool weather during summer allows farmers to reduce the use of pesticides for safe and high quality produce.



Hirosaki Central Food Market (Hirosaki City) MAP/C-5

The market features the freshest seafood and just-made hot food. The famous candied sweet potatoes are sold from autumn to spring.
● Approximately 5 minutes by car from JR Hirosaki Station

Furukawa Market "Nokkedon" (Aomori City) MAP/C-4

Furukawa Market is a treasure chest of seasonal ingredients that opened around 1965. The market has the atmosphere of the Showa era (1926-1989). The ever popular Nokkedon is a DIY dish: first, buy a set of coupons and swap one for a bowl of rice, then go around the market and choose your favorite toppings.
■ Location: Aomori Fresh Fish and Vegetable Center, 1-11-16 Furukawa (Use the parking lots nearby. Charged)
■ Nokkedon Time: 7:00 a.m. ~ 4:00 p.m.
* You can exchange your coupons at stalls with a flag. Business hours vary by shop.
■ Closed: Aomori Fresh Fish and Vegetable Center: Tuesdays
● Approximately 5 minutes on foot from JR Aomori Station



How about some souvenirs from Aomori, Japan?

Various craft products unique to Aomori, created using the wisdom of our ancestors and traditional techniques handed down through generations



Koginzashi Embroidery

Koginzashi embroidery originated about 240 years ago. Poor farmers at the time developed a technique to use hemp, which was not durable and had a poor heat-retaining property, as clothing that was durable and warm. The technique has been passed down and mastered through the generations.



Tsugaru Lacquerware

Tsugaru Lacquerware was first created about 300 years ago, and it was designated as a national traditional craft. Four traditional techniques have been handed down to the present day. Hiba arborvitae is used as a raw material, and it goes through about 50 processes to be completed as lacquer ware.



Tsugaru Kanayamayaki

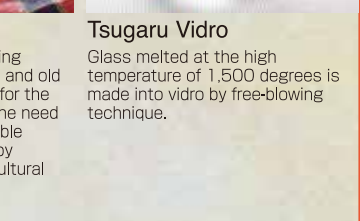
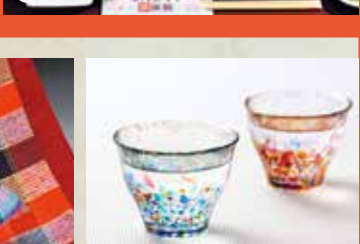
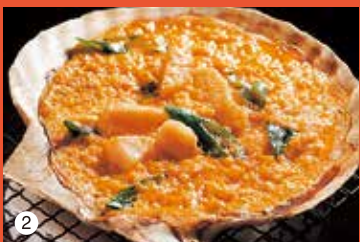
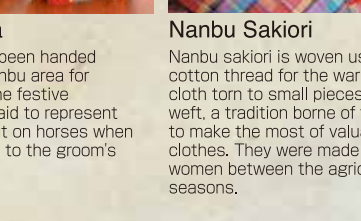
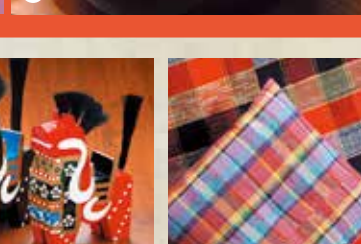
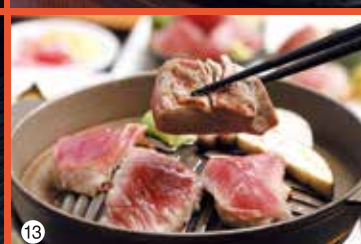
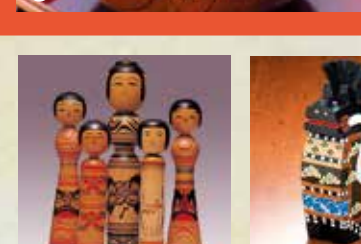
High quality local clay is used for Kanayama-Yaki, which is ceramic ware with a rustic texture, to bake and vitrify at a high temperature of 1,360 degrees with the use of only Japanese red pine firewood without glaze.



Cypress Woodwork

Made with wood from Aomori's natural cypress forest, known as one of the three most beautiful woods in Japan. Hiba cypress is moisture-resistant and aromatic, and has elaborate and beautiful grains, so it is widely used for furniture, doors, doorframes, interior finishing materials, and woodwork.

Local cuisine made using high-quality water and seasonal crops, developed from everyday wisdom.



1 Horse meat

Popular cuisine in the horse raising region of Kennan. Tender horse meat, which provides high protein and low calories, has a rich taste.

2 Kaiyaki Miso

This is a home-style dish with a big scallop shell used as a pan. A scallop is put in the scallop shell with soup in it. Then Miso and beaten eggs are added.

3 Scallop Sashimi

Aomori prefecture is a major scallop producer. Scallops from the prefecture are full-flavored and its scallop sashimi is especially tender.

4 Squid Sashimi

Squid can be caught along the prefectural coast. Hachinohe Port in particular yields the largest catch of squid in Japan. Squid tastes wonderfully crunchy.

5 Oma Tuna Sashimi Rice Bowl

Tuna caught by single-hook fishing in Oma Town are well known nationwide. These fatty tunas are prized and considered superb.

6 Nakadomari Rockfish Meal

(Nakadomari raw and boiled rockfish tray) Rockfish is high-quality fish caught in Nakadomari. This new Nakadomari dish uses a whole rockfish caught in Tsugaru Channel. The tray includes fresh sashimi of a whole rockfish and delicious piping hot rockfish boiled in soy sauce.

7 Towada Barayaki

Sauteed beef rib with large amount of onions marinated in sweet and spicy sauce, and grilled on a hot plate. This local dish delight goes well with white rice and stimulates your appetite.

8 Senbei Jiru

This local cuisine is made with Nanbu wheat crackers produced especially for soup. The crackers are broken, placed in soup, and cooked thoroughly.

9 Codfish Jappajiru

A local dish made with the head and bony parts left over after filleting codfish. It's boiled with daikon radish and carrots.

10 Aomori Shamorock Chicken

Aomori Shamorock is a high quality locally-produced chicken developed independently in Aomori Prefecture. Shamorock tastes rich and tender.

11 Hachinohe Maeoki Mackerel

Fresh and delicious mackerel caught several kilometers off Hachinohe fishing port. With a lot of unsaturated fatty acid, it's very healthy.

12 Flounder Zukedon

Fresh flounder is marinated in a sauce and then placed over rice in bowl. It is a lavish local dish.

13 Fukaura Tuna Steak

Locally caught tuna is enjoyed in three small bowls: one with sashimi on top, one with one side grilled and one with both sides grilled. It is a set meal served on a tray filled with the great flavor of Fukaura tuna.

14 Local Sake

Aomori is blessed with a cool climate and clear water. The line up of rich local sake is made from the rice produced in this prominent rice-producing region.

15 Monkfish

Aomori boasts one of the highest monkfish catches in Japan. On the Shimokita Peninsula, monkfish caught using a unique method can be enjoyed at its freshest.

16 Aomori Ginger Miso Oden

Aomori ginger miso oden topped with miso sauce mixed with grated ginger. Mildly sweet miso and the rich flavor of ginger have been enjoyed for years.

17 Kuraishigyu

Kuraishigyu is premium quality beef that is finely textured and tender, and tastes rich. Premium quality Japanese black beef produced in Aomori has been highly acclaimed at national beef quality competitions.

18 Ichigoni

Featuring the aroma of the ocean, tasty sea urchin and abalone, this popular seafood soup will stimulate your appetite.

19 Kenoshiru

This is local Tsugaru dish made with chopped daikon, carrots and various mountain vegetables boiled with miso flavor. This is eaten a little at a time during winter.

20 Hiranai Fresh Scallop Course

The course includes fresh scallop sashimi, scallop steak, sushi with baby scallop, baby scallop soup and scallop ice cream. Only available in Hiranai, the town with the number one scallop production in Japan.

Aomori City



- 1 ASPAM (Aomori Prefectural Center for Tourism and Industry)**
There is an observation deck to enjoy a view not only of the city but also of the Shimokita, Tsugaru, and Natsudomari Peninsulas, Mutsu Bay and the Hakoda mountains. There is also a 360-degree multiscreen realistic panoramic projection of Aomori sights, and a corner to promote local produce. Live Tsugaru shamisen performances are also presented free of charge.
●Approximately 7 minutes on foot from JR Aomori Station



- 2 Seikan Memorial Ferry Hakkodamaru**
Hakkodamaru is a memorial ship that introduces the history of the Seikan ferry, which ended its service in 1988. Visitors to the ship can take a look at its engine room and the gangplank used during its service years. The illuminated ship accentuates the waterfront at night.
●Approximately 5 minutes on foot from JR Aomori Station



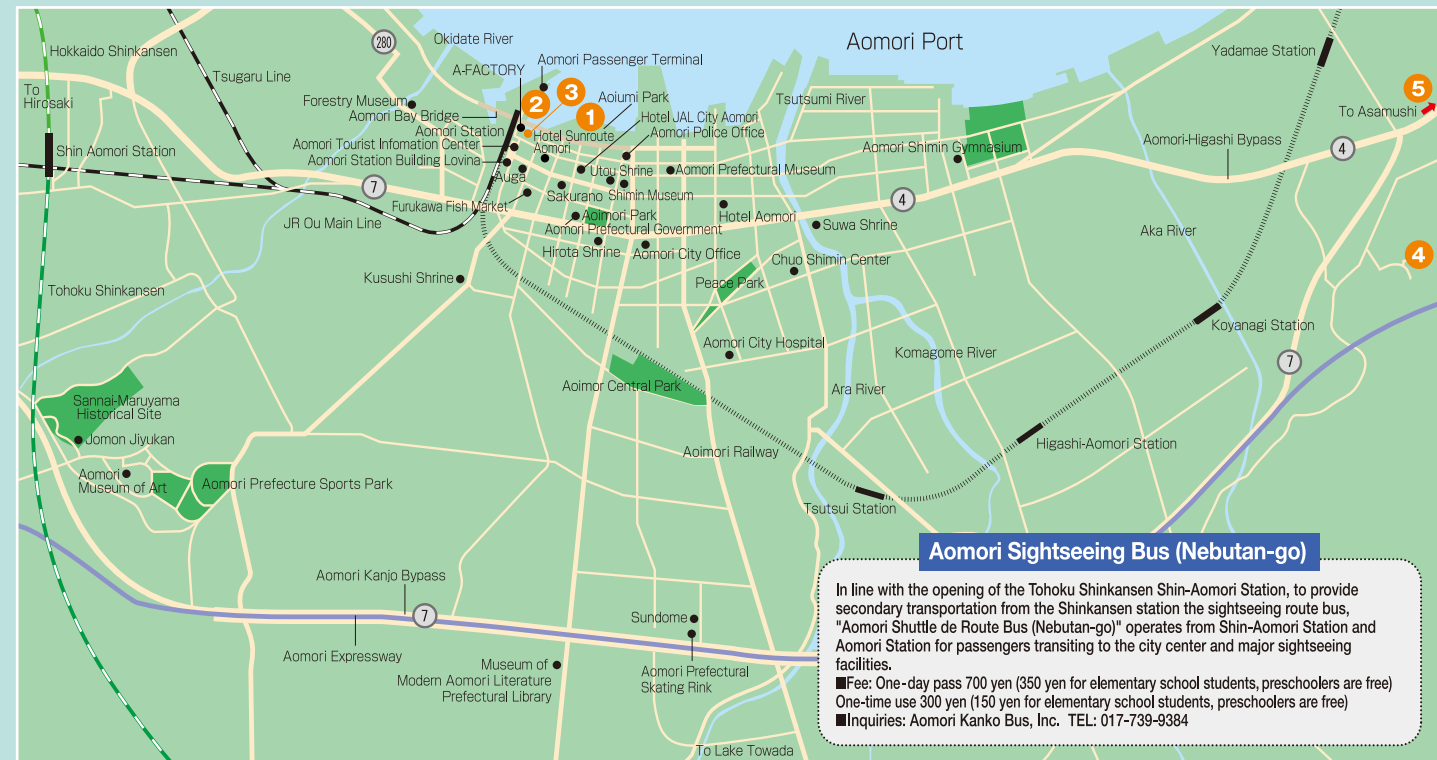
- 3 Nebuta Museum WA RASSE**
The museum exhibits the history and four full-sized floats from Aomori Nebuta Festival. A dreamy space where visitors can experience the festival throughout the year.
●Approximately 1 minute on foot from JR Aomori Station



- 4 Showa Daibutsu (Great Buddha Statue) in Seiryuji Temple**
In Seiryuji Temple lies Japan's largest bronze seated statue of Buddha called the Showa Daibutsu. On the premises, there is a five-story 39-meter high pagoda that is Japan's fourth highest five-story pagoda and made completely of hiba cypress. There is also a main hall and a vermilion-lacquered Daishido hall.
●Approximately 30 minutes by car from JR Aomori Station



- 5 Asamushi Aquarium**
A large number of rare aquatic animals from Aomori Prefecture and the whole world are on display. A 15-meter long walk-through tunnel, penguin, sea lion and seal feeding.
●Approximately 15 minutes on foot from Aomori Railway Asamushi-Onsen Station



Hirosaki City



- 1 Hirosaki Park (Hirosaki Castle)**
Hirosaki Park houses the tower, turrets, and gates of Hirosaki Castle, the seat of the Tsugaru Clan, which unified the Tsugaru area in Aomori Prefecture, and visitors can visit the places they lived in. Hirosaki park is nationally known as one of the best cherry blossom viewing spots in the spring.
●Approximately 10 minutes by car from JR Hirosaki Station



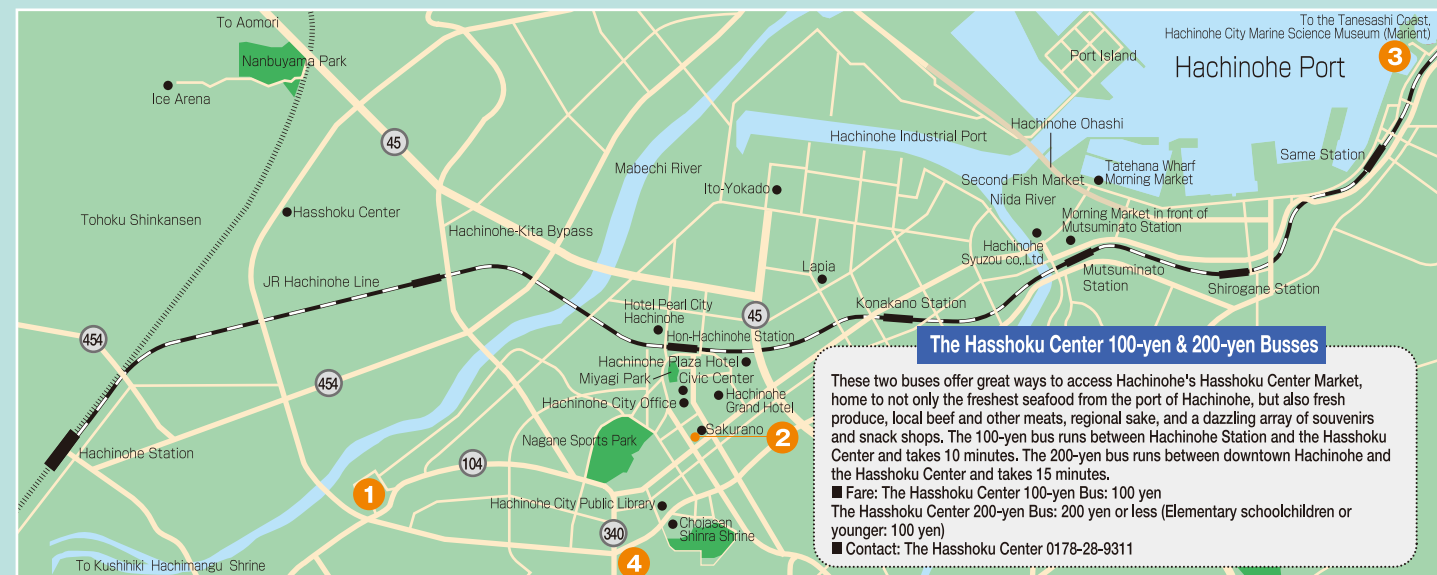
- 2 Samurai and Merchant Residences**
A group of traditional buildings including old samurai residences and merchant residences from the feudal age are preserved. Hedges of cherry trees and board fences preserve a characteristic landscape. With sake breweries and warehouses still lined up along the street, visitors can enjoy the atmosphere of the Edo period.
●Approximately 15 minutes by car from JR Hirosaki Station



- 3 Hirosaki Museum of Contemporary Art**
This museum was built under the concept of "succession of memory" in two renovated sake brewery warehouses from 1907 and 1923. In the art building where exhibitions are held, walls and pillars from when it was a warehouse still remain, and you can feel the building's long history. In the cafe and shop building, there is also a factory that produces cidre from Aomori's delicious apples.
●Approximately 10 minutes by car from JR Hirosaki Station



- 4 Hirosaki Apple Park**
Located in the production center of apples in Hirosaki, the park provides a place for relaxation. In the site of about 40,000m², there are 1,000 apple trees of about 60 kinds, so visitors can experience and learn various things about apples.
●Approximately 20 minutes by car from JR Hirosaki Station



Hachinohe City



- 1 Nejo-no-Hiroba (Nejo Castle Historic Site)**
This is the archaeological site of the Nejo Castle, which is said to have been built by Moroyuki Nanbu in 1334. The keep of the castle, a stable, a workshop, a foundry, a warehouse, and a shed were restored around the keepers' quarters.
●Approximately 10 minutes by car from JR Hachinohe Station



- 2 Hachinohe Portal Museum "Hacchi"**
The museum houses exhibition booths introducing industries, food, festivals, history, culture, as well as the morning market and back streets. There is also space for creative activities. Visitors can enjoy the attractive aspects of Hachinohe throughout the year.
●Approximately 11 minutes on foot from JR Hon-Hachinohe Station



- 3 Kabushima Island**
This island with its breeding ground of black tailed gulls is designated as a natural treasure. In May, yellow turnip flowers bloom and create a beautiful landscape in contrast with about 30,000 Black-tailed gulls.
●Approximately 15 minutes on foot from JR Same Station



- 4 Korekawa Site**
This archeological site of the Jomon period in the Korekawa district is generally called the Korekawa Site. Of excavated items, including earthenware, stoneware, baskets, lacquer ware, and wood products, 933 items are stored and displayed as important national properties in Korekawa Archaeological Institution.
●Approximately 20 minutes by bus from JR Hon-Hachinohe Station

Tourist Infomation Centers (TIC)

- information on traveling at the counter for foreign travelers
- sightseeing brochures and maps in foreign languages (free of charge)
- information on sightseeing by phone or in writing in response to inquiries from foreign travelers

JNTO Tourist Information Center

Shin-Tokyo Bldg. 1F, 3-3-1 Marunouchi, Chiyoda-ku, Tokyo 100-0005

TEL: +80-3-3201-3331 (03-3201-3331 in Japan)

Narita International Airport Information Center (2nd terminal) 0476-34-5877

Narita International Airport Information Center (1st terminal) 0476-30-3383

Kansai Tourist Information Center 072-456-6160



“i” Tourist Information

Tourist information center for foreigners traveling in Aomori Prefecture

Aomori City Tourist Information Center 017-723-4670

Aomori Airport Tourist Information Center 017-739-2007

Aomori Tourist Information Center 017-752-6311

Hirosaki City Tourist Information Center 0172-26-3600

Hirosaki City Tourist Center 0172-37-5501

Hachinohe Tourist Center 0178-27-4243

Roadside Station Shichinohe 0176-62-5777

Towadako Tourist Information Center 0176-75-2425

Misawa Airport Tourist Information Center 0176-53-7500

Questions and answers about problems you may encounter

Q: What should I do if I lose my passport?

A: Report it to the police promptly, and at the same time, apply for the reissue of a new passport to your home country's embassy or consulate

The following are necessary for the reissue of a new passport:

Photo, certificate of lost passport (to be issued by the police), passport number, and date of issuance

Q: What should I do if get ill unexpectedly, or injured?

A: First, you should stay calm, and explain your condition to people nearby, or call 119 when you need an ambulance.

* By calling 119, you will be connected to a fire department headquarters having jurisdiction, or the nearest fire department. Explain calmly whether you have encountered an accident, or you or somebody else has been suddenly taken ill. Tell your address, landmarks to reach there, the conditions of patients, their genders, and whether they have personal physicians.

Q: What should I do if I encounter a crime or an accident?

A: Call 110 immediately.

* Upon dialing 110 anywhere in Aomori Prefecture, you will be connected to the police headquarters in Aomori City. (If you call 110 by cellular phone etc., in an area near the prefectural border, you may be connected to a police dispatcher.)

Considerations when calling 110

By calling 110, you will be connected to a police officer who will ask you some questions in the order of greatest importance, so you should stay calm and reply accurately and loudly.

When you go to a clinic or hospital:

★ If you do not understand Japanese, take somebody with you who can speak Japanese whenever possible. It is advisable to contact in advance because, even in a hospital with foreign-language-speaking doctors, they may be off-duty, or receptionists may not be able to speak foreign languages.

★ There is a medical insurance system to alleviate patients' burdens to pay medical expenses in case one gets ill or injured. You should take the medical insurance as early as possible.

★ In case your daily life or medical treatment is limited for religious or other reasons, please explain to your doctor when you see them.

The following are necessary when receiving medical care:

(1) Insurance card, (2) cash (only cash accepted to pay for medical care), (3) passport, and (4) note of your address, phone number, etc.

It is recommended that you bring a card that describes your address, phone number, and the like so that unnecessary difficulties will be eliminated at the time of reception. It is also recommended that you bring a note of your prominent symptoms so that it will help your doctor give a diagnosis, and help your doctor's fee to be decided at the counter.

Medical facilities in Aomori with multilingual support

JNTO medical care guide

https://www.jnto.go.jp/emergency/eng/mi_guide.html



Japan Visitor Hotline

(Available in English, Chinese and Korean)

24hrs 365days + 81 (0)50-3816-2787

International Services by NHK, Japan's Pubcaster



Japan Official Travel APP



Safety tips app - get alerts about disasters



Safety tips

Android



iPhone



「Amazing AOMORI」 The Official Travel Guide

<https://aomori-tourism.com/en/>



<https://www.youtube.com/@aomorijapan5879/>



<https://www.facebook.com/aomori.jp/>



<https://www.instagram.com/amazing.aomori/>



Inquiries

Aomori Prefectural Organization for Tourism and Globalization

8F, 1-1-40 Yasukata, Aomori-shi 030-0803
Tel: 017-722-5080

Aomori Prefecture Tokyo Office Tourist Information Center

Aomoriken Kaikan 1 Fl, 2-3-11 Fujimi, Chiyoda-ku, Tokyo 102-0071
Tel: 03-5276-1788

Aomori Prefecture Tourism Promotion and International Exchange Div.

1-1-1 Nagashima, Aomori-shi 030-8570
Tel: 017-734-9130

Aomori Prefecture Tokyo Office

Todofuken Kaikan 7 Fl, 2-6-3 Hirakawa-cho, Chiyoda-ku, Tokyo 102-0093
Tel: 03-5212-9113